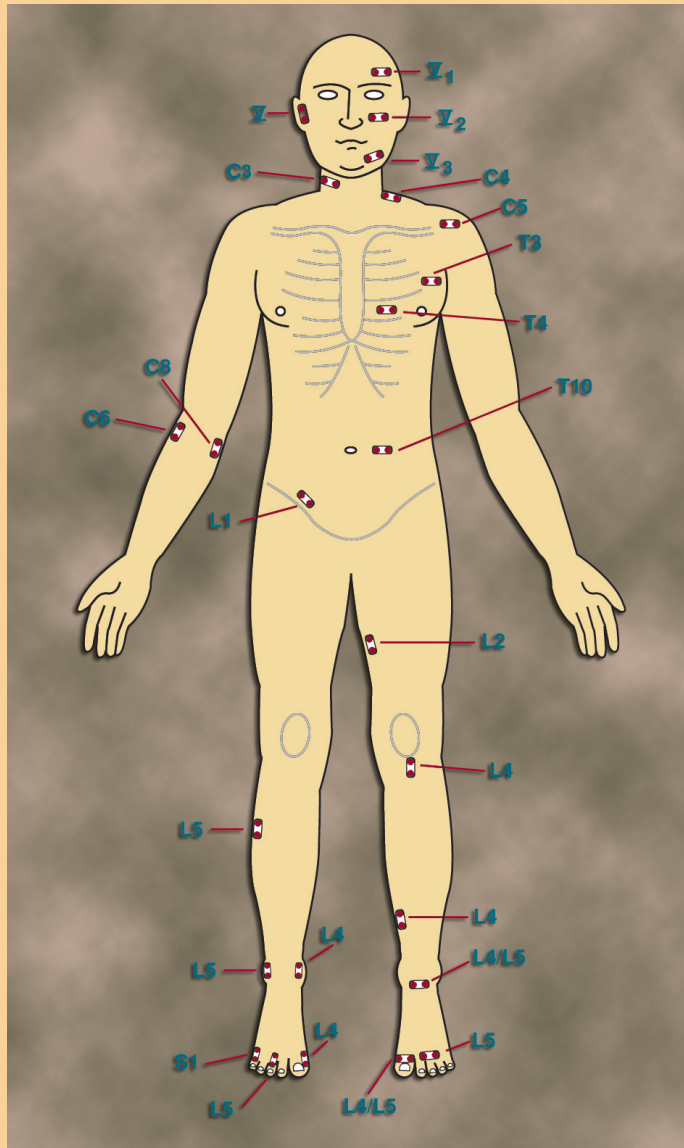


NEUROMETER®

Clinical and Research Update (10/2009)



Neurometer® Clinical and Research Update (10/2009)

Table of Contents

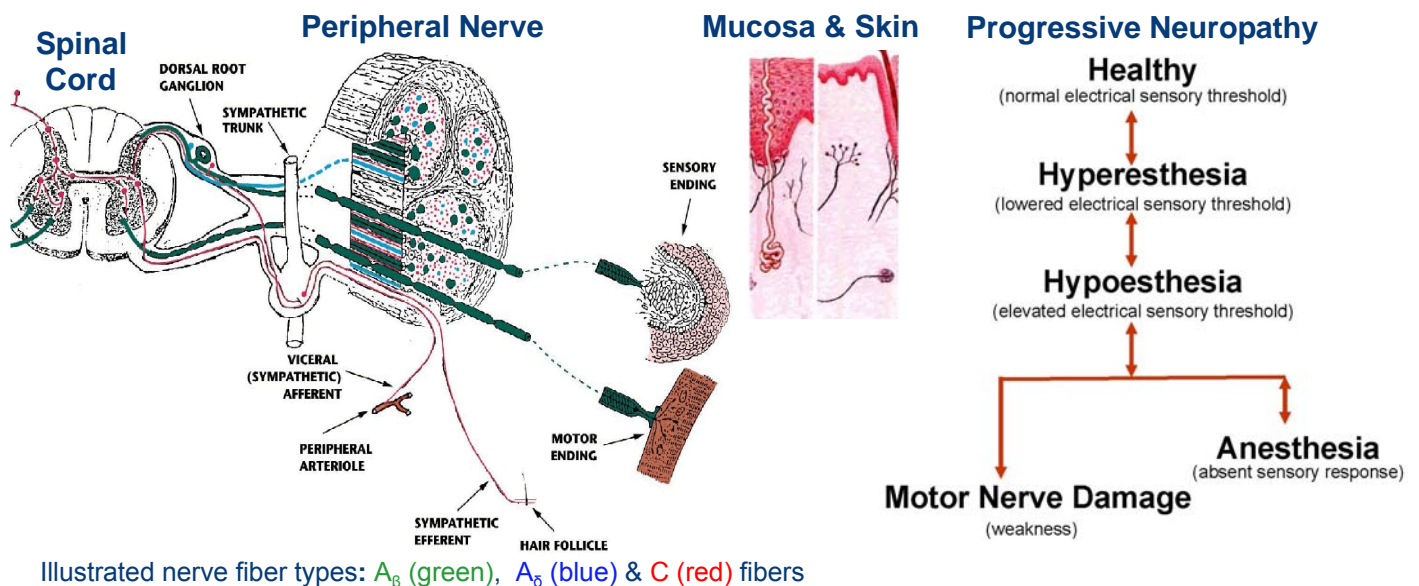
Neurometer® Diagnostic Sensory Evaluation	1
Performing a Neurometer® Electrodiagnostic Evaluation	2
Background	2
Polyneuropathy Diagnosis: Anatomic & Neuroselective	3
Mapping Polyneuropathy - Axonal vs Demyelinating	3
Upper Extremity Differential Diagnosis	3
Upper /Lower Brachial Plexopathy	3
Carpal Tunnel Syndrome (CTS)	3
Upper Extremity Radiculopathy and Spinal Pathology	4
Lower Extremity Differential Diagnosis	4
Radiculopathy, Myelopathy & Focal Lesions	4
Dental, Mucosal & Genital CPT Measures	5
Urethral & Bladder Catheter Electrode	5
Neurometer® Device Threshold Test Modes	5
Current Perception Threshold (CPT) ($p < 0.006$, resolution +/- 20 μ A)	5
Ranged Current Perception Threshold (R-CPT)	5
Pain Tolerance Threshold (PTT)	5
Percentile Allodynia Testing	5
Remote Computer & Auditory Control	5
Animal Response Testing	5
Other Applications	6
Cosmetic	6
Synthetic Nerves, Stem Cells and Nerve Regeneration	6
Environmental/Occupational	6
Sports Medicine	6
Neurometer® Technology Comparison to Other Diagnostic Procedures	6
Sensory Nerve Fiber Types	7
Neuroselective Pathology	7
“Painless Neuropathy” Loss of Protective Sensation	7
C Fiber Neuropathy and Autonomic Dysfunction	7

Neurometer® Electrodiagnostic Evaluation	
Neuroselectivity, Hyperesthesia and Pain	
.....	<u>8</u>
Hyperesthesia and Allodynia	<u>8</u>
Pain Tolerance Threshold (PTT)	<u>8</u>
Direct Nerve Fiber Stimulation	<u>9</u>
Endnotes	<u>9</u>
Legal Notices	<u>15</u>

Neurometer[®] Diagnostic Sensory Evaluation

More than 30 years after leaving the laboratory for clinic applications ranging from Podiatry to Neurology and dozens of other specialties in-between, the Neurometer[®] evaluation continues to provide unique diagnostic measures of sensory nerve conduction thresholds (sNCTs). The most widely used sNCT measure is Current Perception Threshold (CPT[®]) which is the minimum amount of painless electrical stimulus that consistently elicits a nerve response.

The Neurometer generates a constant current stimulus by monitoring and compensating for tissue impedance variations.¹ The stimulus evokes responses that quantify the functional integrity of each of the three major sub-populations of sensory nerve fibers. Specifically, A_β, A_δ & C fiber groups are selectively stimulated by sinusoid waveform currents of 2000 Hz, 250 Hz and 5 Hz respectively. Using small surface electrodes, this test generates discrete double-blinded CPT measures (p<0.006) representing minimum detectable current intensities (+/- 20 μAmp.) for each fiber type.²



Advantages of the Neurometer Evaluation

Common metabolic/toxic and progressive neuropathies affect sensory nerves before motor nerves. Affected sensory nerves pass through reversible stages of hyperesthesia (often sub-clinical) then hypoesthesia and anesthesia. These sensory impairments occur in specific nerve fiber sub-populations. CPT studies have the unique capacity to evaluate the full spectrum of sensory nerve function in all the major fiber sub-populations. Patients are frequently asymptomatic in the earliest stages. The earliest stage of the pathologic process is usually the easiest phase to effectively intervene. The Neurometer detects hyperesthetic sensory neuropathy in non-diabetics with impaired glucose tolerance and in non-diabetic obese individuals. This ability to detect subclinical abnormalities in conditions known to carry a high risk of polyneuropathy is a tremendous clinical diagnostic advantage. It also detects the hypoesthesia of advanced neuropathic conditions as well as nerve regeneration.³

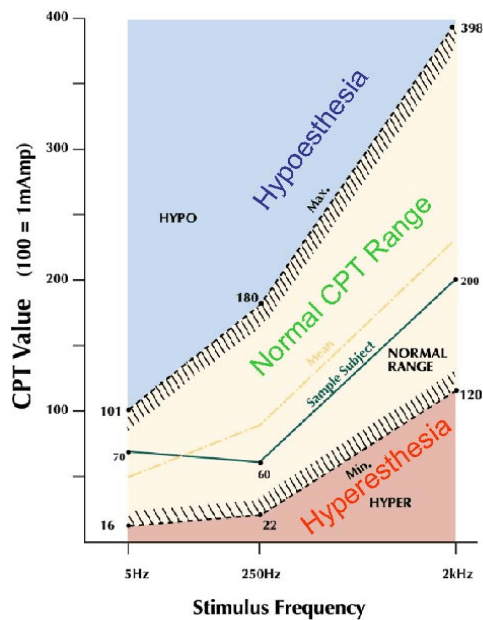
Publications confirm that sensory impairments ranging from polyneuropathies (diabetic, demyelinating, toxic) to compressive lesions (Carpal Tunnel Syndrome), radiculopathies, spinal cord lesions as well as regeneration may be neuroselectively evaluated. Additional applications of the Neurometer include pharmaceutical, cosmetic, environmental and laboratory animals.

Performing a Neurometer® Electrodiagnostic Evaluation

Painless standardized automated double-blind testing methodology is used to determine the CPT. It is based on the same psycho-physical principles used in routine hearing tests. The painless stimulus is characterized as “tingling”, “prickling”, or “buzzing”. Qualitative measures such as warm, cold, vibration, touch etc. are not a factor.

Electrodes are positioned at the prescribed test site and held in place with tape. Directions for the technician are displayed on the LCD screen. The subject is instructed to press a button until a stimulus is detected at the site of the electrode(s) and then release the button. At this point the CPT measure is verified using Compliance Guard® software. This effectively monitors responses for consistency. CPT measures are then classified by comparison to the internationally validated normative database.

Finger CPT vs. Frequency
Normal, Hyper & Hypoesthetic Ranges



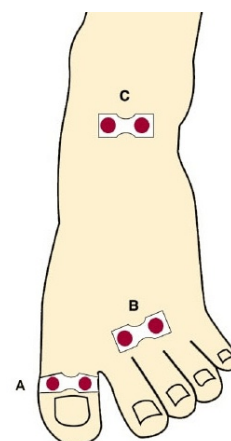
Background

Neurotron, Inc., founded in 1981, in Baltimore, MD, USA designs and develops Neurometer electrodiagnostic devices. FDA registered in 1986, the Neurometer emerged from laboratory studies at McGill University, Montreal, PQ, Canada and clinical research at the Johns Hopkins University School of Medicine, Baltimore. More than one million painless Neurometer studies have been conducted with over 600 scientific peer-reviewed publications. These affirm that this automated electrodiagnostic procedure objectively and selectively quantifies the functioning of both unmyelinated and myelinated sensory nerve fibers at any cutaneous/mucosal/dental test site. The Neurometer has been useful in guiding the clinician to choose the most appropriate therapy and for monitoring and evaluating interventions.

Polyneuropathy Diagnosis: Anatomic & Neuroselective

Mapping Polyneuropathy - Axonal vs Demyelinating

Most metabolic and toxic neuropathies typically affect sensory nerves before motor nerves and present with a dying back distribution in the tips of the toes first and later the fingers. Mapping the distribution of sensory impairment resulting from polyneuropathy and noting the type of axonal dysfunction permits the differential diagnosis of diffuse demyelinating vs distal axonal polyneuropathies.⁴ CPT measures from the big toe (A) are generally the first to be affected, ranging from the earliest hyperesthetic stage to the advanced hypoesthetic condition. Normal sensation at proximal test sites (B, C) confirms the clinical diagnosis of distal dying back polyneuropathy. In contrast, demyelinating polyneuropathies typically affect both proximal and distal CPT measures associated with myelinated fiber function (2000 Hz and 250 Hz CPTs) but not measures associated with unmyelinated fiber function (5 Hz CPTs).

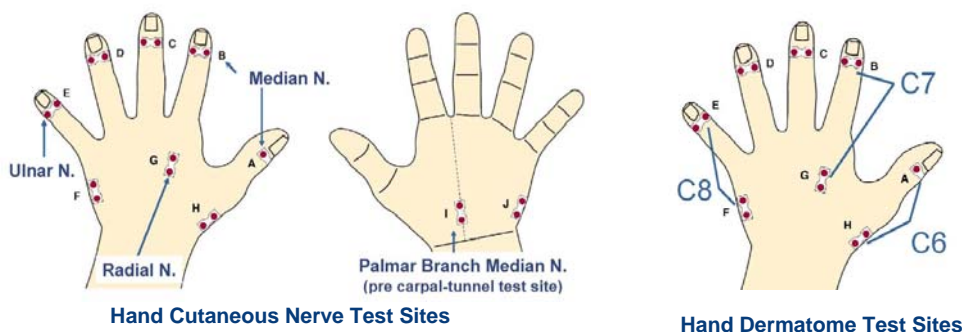


Polyneuropathy Test Sites

CPT testing at the big toe incorporates both the superficial and the deep peroneal nerves (4th and 5th lumbar dermatomes respectively, site A above). This neurological overlap prevents focal nerve lesions or mono-radiculopathies from affecting the CPT measures at this site. Conversely, symmetrical dying back polyneuropathies affecting both the superficial and deep peroneal nerves are easily detectable at this location.

Upper Extremity Differential Diagnosis

Screening for Carpal Tunnel Syndrome (CTS) is conducted at the distal phalange of the index finger (B).⁵ This site is also sensitive to vibration neuropathy (neuroselective for myelinated fibers).⁶ Guyon's canal syndrome, may be detected through a comparison of the CPT measures from a digital ulnar nerve (E) and palmar ulnar nerve (J). Upper/Lower Brachial Plexopathy is evaluated by noting the distribution of impairment.



Carpal Tunnel Syndrome (CTS)

Early CTS is associated with hyperesthetic CPTs (abnormally low electrical excitability) reflecting inflamed nerves that have not lost their functioning. Advanced CTS, associated with a loss of median nerve function, is associated with hypoesthetic (abnormally high) CPTs. The combination of a sensory impairment detected at the distal phalange of the index finger (Site B), combined with normal CPT measures from the ulnar nerve (5th finger, Site E) and palmar branch of the median nerve (Site I), objectively confirms the clinical diagnosis of CTS. The CPT evaluation can detect CTS in the presence of a polyneuropathy. This electrodiagnostic procedure confirms the recovery of median nerve function following conservative or surgical treatment of CTS.⁵

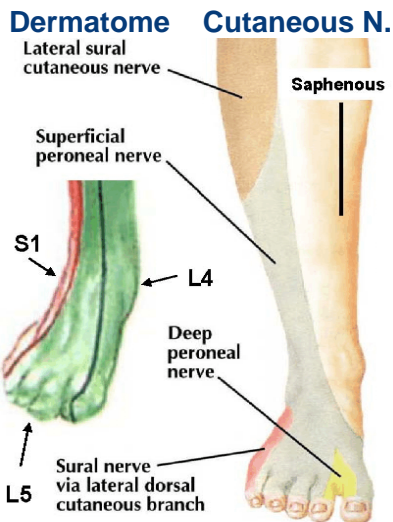
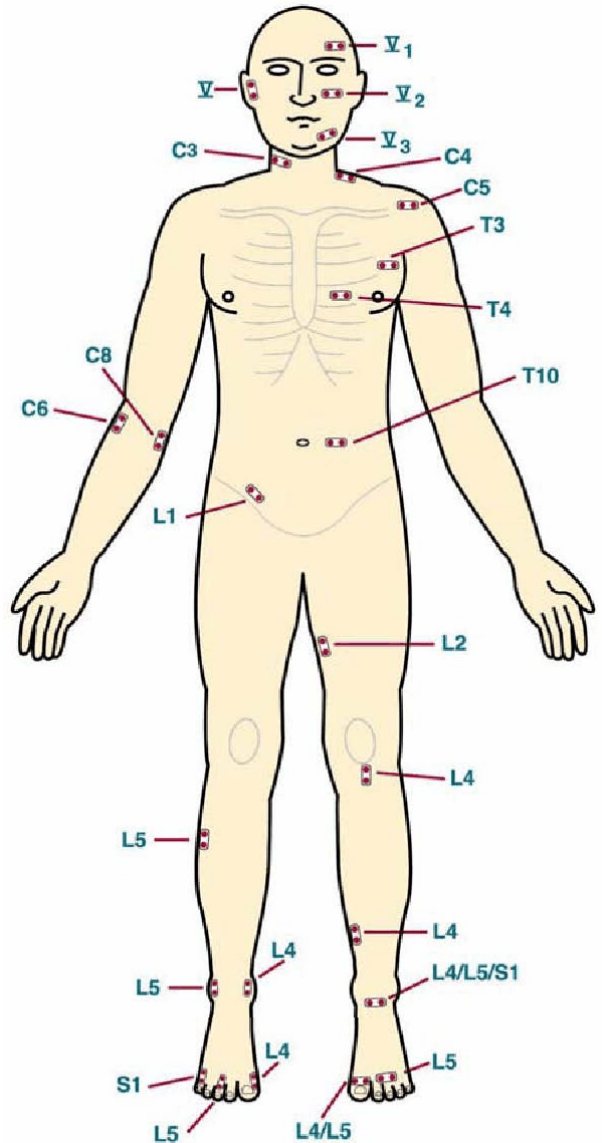
Upper Extremity Radiculopathy and Spinal Pathology⁷

CPT measures quantitate the severity of a radiculopathy. This type of diagnostic evaluation is conducted along a dermatomal distribution. Further confirmation of a radiculopathic sensory impairment would include more proximal testing in the same dermatomes. Abnormal CPT measures caused by radiculopathy, myelopathy or conditions such as syringomyelia will be confined to a dermatomal and neuroselective distribution.⁷

Lower Extremity Differential Diagnosis Radiculopathy, Myelopathy & Focal Lesions⁷

Radicular pain can mimic the pain of peripheral neuropathy, peripheral arterial disease or a focal lesion. Sensory impairments resulting from radiculopathy will affect the lower extremity along a dermatomal distribution. Testing the same dermatome at distal and proximal locations (innervated by different nerves, e.g., sites illustrated below: I- Peroneal and J- Saphenous Nerves) or the same peripheral nerve in different dermatomes (e.g., sites I-L4 and H-L5) can help confirm a suspected radiculopathy. The finding of a peripheral sensory impairments measured from several toes, combined with normal CPTs observed at proximal locations within the same dermatome suggests that the lesion involves a peripheral and not a spinal nerve. Spinal lesions or myelopathy will result in a segmental sensory impairment where all dermatomes below the level of the lesion are impaired.

CPT Dermatome Test Sites



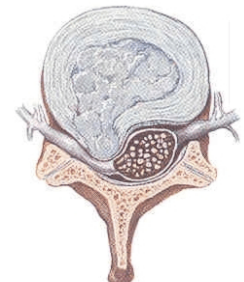
Standardized CPT Test Sites (Norms Established)



D - (S1) Sural N.
F - (S1) Sural N.
H - (L5) Sup. Peroneal N.
J - (L4) Saphenous N.

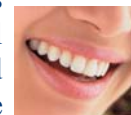
E - (L5) Sup. Peroneal N.
G - (S1) Sural N.
I - (L4) Sup. Peroneal N.
K - (L4/S2) Tibial N.

Herniated Disc

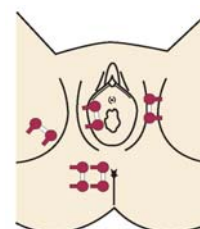
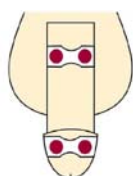


Dental, Mucosal & Genital CPT Measures

Dental testing includes tooth measures and oral mucosal measures.⁸ Neurometer measures have proved useful for uro-gyn and pharmaceutical studies as well as for differential diagnostic applications.⁹ Experimental catheter electrodes for oral, urethral (proximal and mid) and , bladder, vaginal/anal applications and other specialized electrodes are available for research.



Urethral & Bladder Catheter Electrode with Lumen (12 Fr) (positioning balloon inflated, electrode is black)



Bladdertrode™



Urotrode™ (cuff balloon)



Vaginal/Rectal G-Trode™



Neurometer® Device Threshold Test Modes

Test results are evaluated using the Neuval® Windows® software. The reports include a grading of the functional integrity for the specific nerves and their sub-fiber groups and a summary. The findings are based upon range, within-site and between-sites ratio analyses through comparison to a database of clinically established normative values. Neurometer test modes include:

Current Perception Threshold (CPT) ($p < 0.006$, resolution $\pm 20 \mu\text{A}$) - Painless Current Perception Threshold. Standardized automated double-blind determination mode requires 5-8 minutes per nerve/site.

Ranged Current Perception Threshold (R-CPT) ($p < 0.05$, Ranged CPT) - This mode allows neuroselective sensory threshold determination in approximately 2-3 minutes per nerve/site. Normative data is pre-programmed for 35 of the most common testing sites and a print out of the results immediately indicates if the subject's measures are within these norms, hyperesthetic or hypoesthetic.

Pain Tolerance Threshold (PTT) The noninvasive atraumatic PTT mode permits the neuroselective evaluation of pain. There are established PTT values for the finger and toe.

Percentile Allodynia Testing This mode provides an automated PTT test completion based on normative PTT values established for the fingers and toes enables a less painful method to evaluate allodynia than the standardized PTT evaluation

Remote Computer & Audito Control Windows® software is available for research and laboratory applications.

Animal Response Testing A non-invasive and harmless test permitting serial measures from the same site. The test may be used to assess any cutaneous or mucosal site using specialized electrodes for large or small animals.¹⁰ Evaluation of the concha of the ear gives direct access to brain stem neurons for CNS measures. Rat bladder electrodes are available.



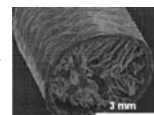
fMRI Testing Established utility for applications with fMRI technology.²⁸ Custom fMRI electrode cables are available from Neurotron, Inc. Additionally, a fMRI computer interface is available.

Other Applications



Cosmetic The application of the Neurometer in cosmetics came from dentistry and dermatology studies of sensitive teeth/oral mucosa and skin. Additionally the evaluation of the itch response has proved a useful measure.¹

Synthetic Nerves, Stem Cells and Nerve Regeneration Neurometer measures have assisted in monitoring the recovery of sensation following various implants and transplants.³



Environmental/Occupational Monitoring rice paddy farmers for pesticide and fire fighters for PCB exposure as well as detecting the toxicity from arsenic, lead, other heavy metals and vibration exposure - the Neurometer has played a key role in environmental medicine.^{11,22}



Sports Medicine Providing objective measures of sensory function of marathon runners on mountain tops and bicyclers in laboratories is made possible because of the Neurometer's portability. The battery powered Neurometer is versatile!¹²



Medical Legal Neurometer evaluations have been recognized by courts in the USA and other countries for disability evaluation.¹³

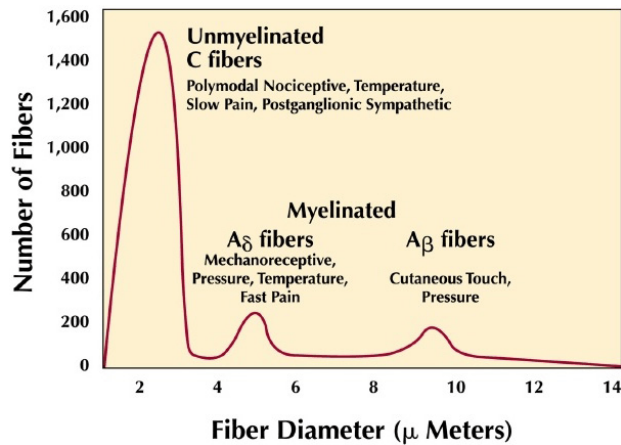
Neurometer® Technology Comparison to Other Diagnostic Procedures

Capabilities and Features	Sensory Diagnostic Study					
	CPT	SSEP	sNCV	Vib	Therm	Biopsy
Neuroselective Evaluation of All Major Sensory Fiber Types	✓					✓
Evaluate Hyperesthesia and Hypoesthesia	✓					
Test Any Cutaneous/Mucosal Site	✓					
Localize Abnormal Sensory Function from Periphery to Spinal Cord	✓	✓				
Evaluate Early and Advanced Regeneration	✓					
Detects Malingering	✓	✓	✓			✓
Unaffected by Skin Thickness, Scar Formation or Edema and Skin Temperature	✓					
Painless Measure	✓			✓	✓	
Standardized Automated double blind study	✓					

"While early intervention and treatment can be critical to slowing the disease's progression, most Americans don't recognize neuropathy's symptoms, which include weakness, numbness, tingling and pain, especially in the hands and feet. If ignored, the symptoms can intensify to loss of sensation to unremitting pain. Neuropathy may be the most common disease in the United States that you've never heard of. Many are even unaware that they have it".

Neuropathy Association, May 2008

Typical Sensory Nerve Fiber Subpopulations



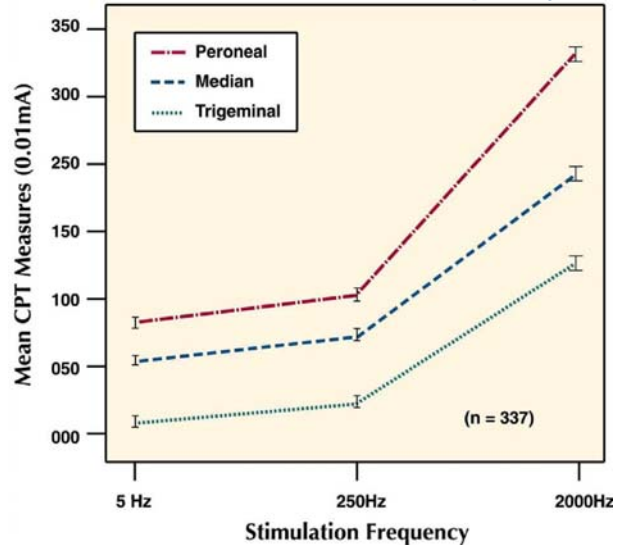
Sensory Nerve Fiber Types

Typical sensory nerves are composed of 3 major subpopulations of fibers. The large myelinated “A β ” fibers conduct cutaneous touch and pressure sensations, the small myelinated “A δ ” fibers conduct temperature, pressure and fast pain sensations while the small unmyelinated “C”-fibers comprising more than 80% of the total, primarily conduct temperature and slow pain sensations. The small myelinated, A δ fibers and unmyelinated C fibers are responsible for conducting protective sensations that guard against serious injury. Unmyelinated C fibers also serve a critical role in the peripheral autonomic nervous system providing the innervation to the smooth musculature. One third of the C-fibers are autonomic efferents. Clinical implications of the loss of large fiber function are not as severe as a loss of smaller fiber function.

Neuroselective Pathology

Clinical complications resulting from C fiber polyneuropathy include foot ulceration, gangrene, cardiac and other types of autonomic dysfunction. The loss of protective function associated with small fiber “Painless” polyneuropathies is also associated with “Painless” myocardial infarction. Standard clinical evaluations ranging from the safety pin to the reflex hammer and sensory nerve conduction velocity tests do not evaluate C fiber function. The Neurometer provides an objective automated non-invasive painless neuroselective evaluation of C fiber as well as A δ and A β fiber functional integrity.

CPT Data: Site vs. Frequency



Both sensory and motor nerves are affected by metabolic polyneuropathy. Common polyneuropathies are associated with sensory symptoms and autonomic dysfunction occurring before weakness or motor impairment. Within the sensory nerve, various subpopulations of fibers have differential susceptibilities to different types of neuropathies.²²

“Painless Neuropathy”

Loss of Protective Sensation

“Painless Neuropathy” is characterized by the selective loss of smaller fiber protective sensation. An individual with this condition has intact large fiber touch sensation and may even be unaware of the neuropathy, greatly increasing the risk of serious injury. For example, the individual may feel the “touch” sensation of stepping on a burning cigarette but not the “protective” sensation of the burn. Due to pain insensitivity, complications from the foot burn may progress to infection and amputation. It is also important that the fingers be evaluated to determine the extent of this neuropathy.

C Fiber Neuropathy and Autonomic Dysfunction

The impairment of autonomic function resulting from C fiber neuropathy can be a risk factor for mortality among diabetic/uremic patients. The CPT evaluation has been reported by an NIH Consensus Conference to be a strong predictor of mortality among kidney dialysis patients.¹⁴

Neurometer[®] Electrodiagnostic Evaluation Neuroselectivity, Hyperesthesia and Pain

The Neurometer generates a constant alternating current (AC) stimulus to evoke nerve responses. The three major sub-populations of sensory nerve fibers are defined by their morphologic, electrophysiologic and functional (e.g. pain vs. non-pain transmission) characteristics. The smallest diameter unmyelinated fibers comprise greater than eighty percent of the total fibers, possess the longest refractory periods and the slowest average conduction velocities (CV) of 1 m/s. In contrast, large diameter myelinated fibers comprise less than ten percent of the total fibers, have the briefest refractory periods and fastest average CV of 60 m/s. Neuroselectivity is achieved by using three different frequencies of an electrical sinewave stimulus (2000 Hz, 250 Hz and 5 Hz), taking advantage of this waveform's frequency dependent rate of depolarization. Large diameter fibers can generate action potentials in response to the rapid 2000 Hz stimulus but small fibers require several milliseconds of continuous depolarization (i.e. low frequency stimulation, e.g., 5 Hz), to reach threshold potential. Large fibers will generate action potentials to the 5 Hz stimulus, but not at physiologically significant rates.¹⁶ Additionally, the quantity of electrons or charge per depolarization of a 5 Hz sinewave (100 msec) is 400 times the charge and duration of a 2000 Hz sinewave depolarization (0.25 msec). Together, these factors result in the 2000 Hz stimulus selectively evoking physiologically significant large myelinated fiber responses and the 5 Hz stimulus selectively evoking physiologically significant unmyelinated fiber responses.

The neuroselective nature of the sinusoid waveform electrical stimulus was first demonstrated in a study comparing the application of a variety of waveform types on healthy individuals at Johns Hopkins in the 1980's.¹⁵ Neurometer measures have been compared with the results of other physiological/imaging,¹⁶ diagnostic,¹⁷ histologic¹⁸ and pharmaceutical studies.¹⁹ These and other studies involving nerve regeneration,²⁰ ischemia²¹ and neuroselective pathological conditions²² have corroborated the neuroselective nature of this stimulus. The CPT measures also have the unique ability of evaluating pathologies such as hyperesthesia and hypoesthesia that may selec-

tively occur in one or more subpopulations of sensory fibers while sparing the others.

Hyperesthesia and Allodynia

Hyperesthesia, as measured by abnormally low neuroselective Current Perception Threshold (CPT) measures, reflects an increased electrical excitability of sensory nervous tissue for the evocation of responses. The resting membrane potential of the sensory nerve fiber increases as the result of stresses such as hyperglycemia.²³ An elevated resting membrane potential decreases the intensity of the excitatory electrical stimulus required to reach the threshold required to evoke an action potential response. In other words, less electrical energy is required to evoke a neuronal response.

Hyperesthesia is reported in the early stages of progressive neuropathy affecting both pre-diabetics and newly diagnosed diabetics.²⁴ Other early occurrences of hyperesthesia are present in alcoholism, Carpal Tunnel Syndrome (CTS) and radiculopathy. A different type of hyperesthesia results from chronic hereditary sensory neuropathies associated with lysosomal storage disorders and primary biliary cirrhosis, demyelinating polyneuropathies and infectious conditions (eg. HIV, Lyme Disease).²⁵ Other neurodiagnostic tests, (e.g. sensory nerve conduction velocity, quantitative tactile, vibration and thermal thresholds) are insensitive to the hyperesthetic condition which is often sub-clinical.

Pain Tolerance Threshold (PTT)

When the Neurometer stimulus is administered at intensities greater than the painless CPT sensory threshold it is possible to evoke painful sensation. Under patient control, the maximum tolerable intensity neuroselective stimulus is defined as the Pain Tolerance Threshold (PTT). The PTT has been demonstrated to be a reliable measure for the evaluation of pain and select analgesic agents. Allodynia is characterized by increased sensitivity to a non-noxious stimulus

which the subject characterizes as "painful". Allodynia may be evaluated by neuroselective Pain Tolerance Threshold (PTT) measures as well as the less painful "Percentile Allyodynia Test". CPT hyperesthesia and PTT allodynia may occur as neuroselective and independent sensory conditions.²⁶ For example, spinal opiates do not affect the 2000 Hz, 250 Hz or 5 Hz painless CPT measures or the 2000 Hz and 250 Hz PTT measures but they selectively elevate 5 Hz PTT measures in humans.^{19k} Similar Neurometer neuroselective response measures have been reported from rats.^{19l}

Direct Nerve Fiber Stimulation

Neurometer CPT and PTT measures are not receptor or end-organ mediated. The electrical stimulus bypasses the end-organs and directly excites the nerve fibers. Skin freeze or burn lesions precipitate the local release of an "inflammatory broth" (e.g. bradykinins, prostaglandins, leukotrienes, substance P, etc.) which bind to receptors resulting in local sensory thermal and tactile threshold changes. Thermal allodynia (pain evoked by normally painless heat stimulus) and tactile allodynia (pain evoked by a normally painless tactile stimulus, e.g., Von Frey filament stimulus) occurs with these lesions. Research has demonstrated that sNCT electrical allodynia, however, does not occur with the skin freeze model and other differences between these types of stimuli that may be due to their different site of stimulation, i.e., end-organ vs direct nerve stimulation.²⁷

fMRI and Neurometer Pain

Functional magnetic resonance imaging studies from the Massachusetts General Hospital have demonstrated that heat pain and 5 Hz sNCT pain increase metabolic activity in the same areas of the brain; however, there is a habituation to the heat pain stimulus that does not occur with the electrical pain stimulus. This and other fMRI related studies are cited.²⁸

Endnotes

The endnotes include representative examples from more than 600 peer reviewed publications utilizing Neurometer[®] technology. Additional documentation and bibliographies of publications are continuously updated at: www.neurotron.com.

1. Dermatology & Cosmetic Publications

- A.) Blais, M. Grenier, M., Berthod, F. Enrichment of tissue-engineered skin with Schwann cells improves cutaneous nerve regeneration. 69th Annual Meeting of the Society of Investigative Dermatology (SID), Montreal, Canada, 2009. Université Laval, Quebec, QC, Canada.
- B.) Farah, R., Guo, H., Gallus, N., Junqueira, A., Ericson, M., Boeck, C. Hordinsky, M. Differences in the current perception thresholds (CPTs) of C nerve fibers in affected and unaffected scalp of patients with alopecia areata. 69th Annual Meeting of the Society of Investigative Dermatology (SID), Montreal, Canada, 2009.
- C.) Ericson, M., Boeck, C. Hordinsky, M. Differences in the current perception thresholds (CPTs) of C nerve fibers in affected and unaffected scalp of patients with alopecia areata. Society for Investigative Dermatology, Poster No. 633, Montreal, 2009.
- D.) Ozawa, M.M., Tsuchiyama, K., Gomi, R., Kurosaki, F., Kawamoto, Y. Aiba, S. Neuroselective transcutaneous electrical stimulation reveals neuronal sensitization in atopic dermatitis. Journal of the American Academy of Dermatology, Vol.60(4) 609-614, 2009.
- E.) Porcheron, A., Mauger, E., Guinot, C., Tschachler, E., Morizot, F. Quantitative sensory methods: investigation of skin sensations in response to a chemical stress. Joint World Congress of International Society for Biophysics and Imaging of the Skin (ISBS) and International Society for Digital Imaging of the Skin (ISDIS). Poster 61, 2008.
- F.) Ertel, K., Watson, D., Bacon, R. Instrumental assessment of changes in skin susceptibility to neurosensory phenomena induced by personal care products. Presented at the American Academy of Dermatology, 66th Annual Meeting. Poster 904. Journal of the American Academy of Dermatology, Vol. 58 (2), 2008.
- G.) Hordinsky, M., Ericson, M., Groth, K., Klayum, M., Wilcox, G., Benlhabib, E., Gallus, N., Guo, H., Cornatzer, E., Boeck, C. C2 and C7 dermatome current perception threshold abnormalities in alopecia areata. Intl. Derm. Euro. Abstract 468;2008.
- H.) Kim, S.J., Lim S.U, Won, Y.H., An, S.S., Lee E.Y, Moon S.J., Kim J. The perception threshold measurement can be a useful tool for evaluation of sensitive skin. Int J Cosmet Sci. Oct;30(5):333-7, 2008.
- I.) Porcheron, A., Jdid, R., Nageotte, O., Guinot, C., Tschachler, E., Morizot, F., Modulation of Aβ nerve fibers perception by a daily use of a skin moisturizer. Intl. Derm. Euro. Abstract, 399;2008.
- J.) Kobayashi H, Kikuchi K, Tsubono Y, Tagami H. Measurement of electrical current perception threshold of sensory nerves for pruritus in atopic dermatitis patients and normal individuals with various degrees of mild damage to the stratum corneum. Dermatology, Vol 206(3):204-11, 2003.
- K.) Yokota, T., Matsumoto, M., Sakamaki, T., Hikima, R., Hayashi, S., Yanagisawa, M., Kuwahara, H., Yamazaki, S., Ogawa, T., Hayase Classification of Sensitive Skin and Development of a Treatment System Appropriate for Each Group. (International Federation of the Societies of Cosmetic Chemists) IFSCC Magazine, Vol 6(4):303-307, 2003.
- L.) Ozawa, M., Tsuchiyama, K., Gomi, R., Kurosaki, F., Kawamoto, Y., Aiba, S. Neuroselective Transcutaneous Electric Stimulation Reveals Body Area-Specific

Differences in Itch Perception. Journal of the American Academy of Dermatology. Vol 55:996-1002, 2006.

2. Review Publications

- A.) Shigeki, F., Seiji, T. Review of Current Perceptual Threshold with Neurometer: Differences in the Shape of the Electrode. Journal of Japanese Dental Society of Anesthesiology. Vol.33;(2) 202-207, 2005.
- B.) Katims, J.J. Electrodiagnostic Functional Sensory Evaluation of the Patient with Pain: A Review of the Neuroselective Current Perception Threshold (CPT) and Pain Tolerance Threshold (PTT). Pain Digest Vol 8(5), 219-230, 1998.
- C.) Katims, J.J., Mitsuhashi, H., Miyazaki, T. Electrodiagnostic evaluation of sensory nerve function in the patient with pain: Neuroselective Current Perception Threshold (CPT) and Pain Tolerance Threshold (PTT). Pain Clinic (Japan), Vol 19(4):535-549, 1998.
- D.) Katims, J.J. Evaluation of Pain. 11th International Pain Clinic, World Congress of Pain Clinics (Tokyo) Medimond, S.r.l. Italy, 55-58, 2004.
- E.) Technology and Equipment Review: Quantitative Sensory Testing Systems, Burgess, R.C., ed. Journal of Clinical Neurophysiology, Vol 12(2):192-202, 1995.

3. Regeneration/Transplantation: Recovery of Function (Also see Laboratory Animal Section)

- A.) Caissie, R., Gingras, M., Champigny, M., Berthod, F. In Vivo Enhancement of Sensory Perception Recovery in a Tissue-Engineered Skin Enriched with Laminin. Biomaterials. Volume 27(15):2988-2993, 2006.
- B.) Inada, Y., Morimoto, S., Takakura, Y., Nakamura, T. Regeneration of Peripheral Nerve Gaps with a Polyglycolic Acid-Collagen Tube. Neurosurgery Vol 55(03):640-648, 2004.
- C.) Nishimura, A., Ogura, T., Hase, H., Makinodan, A., Hojo, T.; Katsumi, Y., Yagi, K., Kubo, T. Evaluation of sensory function after median nerve decompression in carpal tunnel syndrome using the current perception threshold test. Journal of Orthopedic Science Vol 8:500-504, 2003.
- D.) Várkonyi, T.T., Farkas, G., Fülöp, Z., Vörös, P., Lengyel, Cs., Kempler, P., Lonovics, J. Beneficial Effect of Fetal Islet Grafting on Development of Late Diabetic Complications. Transplantation Proceedings, Vol. 30:330-331, 1998.
- E.) Winkler, G., Pal, B., Nagybeganyi, E., Ory, I., Porochnavec, M., Kempler, P. Effectiveness of different benfotiamine dosage regimens in the treatment of painful diabetic neuropathy. Arzneim.-Forsch./Drug Research, Vol. 49:220-224, 1999.
- F.) Chu, N.S. Current Perception Thresholds in Toe-To-Digit Transplantation and Digit-To-Digit Replantation. Muscle & Nerve, Vol 19(2):183-186, 1996.
- G.) Shields, M., Beckmann, S.L., Cassidy-Brinn, G. Improvement in Perception of Transcutaneous Nerve Stimulation Following Detoxification in Firefighters Exposed to PCBs, PCDDs and PCDFs. Clinical Ecology, Vol. 6(2):47-50, 1989.

4. Axonal vs. Demyelinating, Infectious and Toxic Polyneuropathy

- A.) Doi, K., Kushizaki, H. Sakura, Nikai, T., Saito, Y. Evaluation of peripheral nerve function using current perception threshold in the herpes zoster patients and the development of post-herpetic neuralgia. The Pain Clinic, Vol. 18(4):345-349, 2006.
- B.) Tseng, C.H. Abnormal current perception thresholds measured by Neurometer[®] among residents in blackfoot disease-hyperendemic villages in Taiwan. Toxicology Letters, Vol. 146(1):27-36, 2003.
- C.) Menkes, D.L., Swenson, M.L., Sander, H.W. Current Perception Threshold: An Adjunctive Test for Detection of Acquired Demyelinating Polyneuropathies. Electromyography and Clinical Neurophysiology, Vol 40; Part 4:195-204, 2000.
- D.) Menkes DL, Hood DC, Ballesteros RA, Bodnar P: Quantitative sensory testing distinguishes axonal from demyelinating polyneuropathies. Muscle & Nerve; 20:1056, 1997.
- E.) Rendell, M.S., Dovgan, D.J., Bergman, T.F., O'Donnell, G.P., Drobny, E.P., Katims, J.J. Mapping Diabetic Sensory Neuropathy by Current Perception Threshold Testing. Diabetes Care, Vol 12(9):636-640, 1989.
- F.) Rendell, M.S., Katims, J.J., Richter, R., Rowland, F. A comparison of nerve conduction velocities and current perception thresholds as correlates of clinical severity of diabetic sensory neuropathy. Journal of Neurology, Neurosurgery and Psychiatry, Vol 52:502-511, 1989.

5. Carpal Tunnel Syndrome

- A.) Tsuda, Y. Evaluation of Clinical Outcome of Carpal Tunnel Syndrome and Cubital Tunnel Syndrome Using Current Perception Threshold Testing. Journal-Japanese Society for Surgery of the Hand. Vol. 25 (3), 205-209, 2008.
- B.) Noh, NA, Seow, R. Current perception threshold in carpal tunnel syndrome's patients in Malaysia. Clinical Neurophysiology 119, S1-S131, P106, (2008).
- C.) Weintraub, M-I., Cole, S-P A randomized controlled trial of the effects of a combination of static and dynamic magnetic fields on carpal tunnel syndrome. Pain Med. Vol (9) 493-504, 2008.
- D.) Katims, JJ Comparison between nerve conduction studies and current perception threshold test in carpal tunnel syndrome. Neurophysiol.Clin Vol.38, 305-306, 2008.
- E.) Aird, J., Cady, R., Nagi, H., Kullar, S., MacDermid, J. The Impact of Wrist Extension Provocation on Current Perception Thresholds in Patients with Carpal Tunnel Syndrome: A Pilot Study. Journal of Hand Therapy. Vol. 19(3):299-306, 2006.
- F.) Nishimura, A., Ogura, T., Hase, H., Makinodan, A., Hojo, T.; Katsumi, Y., Yagi, K., Kubo, T. Evaluation of sensory function after median nerve decompression in carpal tunnel syndrome using the current perception threshold test. Journal of Orthopedic Science Vol. 8:500-504, 2003.
- G.) Nonomura, H. et al. Quantitative assessment for carpal tunnel syndrome by current perception threshold testing. Chubu Seisai (Central Japan Trauma Prevention Journal), Vol 40:877-878, 1997.
- H.) Katims, J.J., Rouvelas, P., Sadler, B.T., Weseley, S.A. Current Perception Threshold: Reproducibility and

Comparison with Nerve Conduction in Evaluation of Carpal Tunnel Syndrome. Transactions of the American Society of Artificial Internal Organs, Vol 35(3):280-284, 1989.

6. Hand-Arm Vibration Syndroms (HAVS)

- A.) Krajnak, K., Waugh, S., Wirth, O., Kashon, M.L. Acute vibration reduces Abeta nerve fiber sensitivity and alters gene expression in the ventral tail nerves of rats. Muscle & Nerve Volume 36(2):197-205, 2007.
- B.) Kurozawa, Y., Nasu, Y. Current Perception Thresholds in Vibration-Induced Neuropathy. Archives of Environmental Health, Vol 56(3):254-256, 2001.
- C.) Pelmeur, P.L. and Kusiak, R. Clinical Assessment of Hand-Arm Vibration Syndrome. Nagoya Journal of Medical Science, Vol 57:27-41, 1994.

7. Radiculopathy Spinal Cord

- A.) Chien A, Eliav, E., Sterling, M. Hypoesthesia Occurs in Acute Whiplash Irrespective of Pain and Disability Levels and the Presence of Sensory Hypersensitivity. Clin J Pain Vol. 24:759-766, 2008.
- B.) Sakai, T., Aoki, H., Hojo, M., Takada, M., Murata, H., Sumikawa, K. Adhesiolysis and targeted steroid/local anesthetic injection during epiduroscopy alleviates pain and reduces sensory nerve dysfunction in patients with chronic sciatica. Journal of Anesthesia Vol. 22(3):242-247, 2008
- C.) Imoto, K., Takebayashi, T., Kanaya, K., Kawaguchi, S., Katahira, G., Yamashita, T. Quantitative Analysis of Sensory Functions After Lumbar Discectomy Using Current Perception Threshold Testing. Eur Spine Journal, Vol 16(7):971-975, 2007.
- D.) Cui, L., Zhu, P., Fu, H., Starr, A. Current Perception Threshold (CPT) in Syringomyelia. Journal of Chinese Neurology, Vol 36(6):447-44, 2003.
- E.) Falci, S.P., Best, L.G, Bayles, R., Cown, C. Dorsal Root Entry Zone (DREZ) microcoagulation for central pain of spinal cord injury: operative intramedullary electrophysiological guidance and clinical outcome. Journal of Neurosurgery (Spine 2), Vol 97:193-200, 2002.
- F.) Yamashita, T., Kanaya, K., Sekine, M., Takebayashi, T., Kawaguchi, S., Katahira, G. A quantitative analysis of sensory function in lumbar radiculopathy using current perception threshold testing. Spine, Vol 27(14):1567-70;2002.
- G.) BenEliyahu, D.J., Tartaglia, S.V., Spinelle, R. Current Perception Threshold/Quantitative Sensory Testing and MRI Findings In Patients with Signs and Symptoms of Cervical or Lumbar Disc Herniation: A Correlative Study of the Neurosensory Diagnosis of Discogenic Pain, American Journal of Pain Management, Vol 10(2):60-65, 2000.

8. Dental / Orofacial Pain Applications

- A.) Kimoto, S., Ogura, K., Feine, J-S., Sasai, H., Yamaguchi, H., Saito, T., Matsumaru, Y., Kobayashi, K. Asymptomatic hypoesthesia of the maxillary alveolar ridge in complete denture wearers. J Oral Rehabil. Vol. 35(9):670-76, 2008.
- B.) Ruoping, C., Huoni, O, Bingyu, W., Meixiu, D., Hodge, C. Quantitative assessment of sensory functions after 3 surgical approaches for trigeminal neuralgia by current perception threshold measurement. Journal of Medical Colleges of PLA Vol. 23:300-307, 2008.
- C.) Caissie, R., Landry, P-E., Paquin, R., Champigny, M-F.,

Berthod, F. Quantitative Method to Evaluate the Functionality of the Trigeminal Nerve. Journal of Oral and Maxillofacial Surgery, Vol. 65(11):2254-2259, 2007.

- D.) Kimoto, S., Ogura, K., Feine, J-S., Sasai, H., Yamaguchi, H., Saito, T., Matsumaru, Y., Kobayashi, K. Asymptomatic hypoesthesia of the maxillary alveolar ridge in complete denture wearers. J Oral Rehabil Vol. 35(9):67076, 2008.
- E.) Ogura, K., Kimoto, S., Yamaguchi, H, Kobayashi, K. Perception thresholds for electrical stimulation of the palatal mucosa. International Journal of Prosthodontics. Vol. 20(4):423-31, 2007.
- F.) Seo, K., Tanaka, Y., Terumitsu, M., S, G. Characterization of different paresthesias following orthognathic surgery of the mandible. J Oral Maxillofac Surg. Vol. 63(3): 298-303, 2005.

9. Urology /Gynecology

- A.) Lowenstein, L, Davis, C., Jesse, K., Durazo-Arvizu, R. Kenton, K. Comparison between sensory testing modalities for the evaluation of afferent nerve functioning in the genital area. Int Urogynecol J Pelvic Floor Dysfunct, Vol. 20 (1) 83-87, 2009.
- B.) Lee , W-C., Wuc, H.P, Taic, T.Y , Yud, H.J, Chiangab, P.H. Investigation of Urodynamic Characteristics and Bladder Sensory Function in the Early Stages of Diabetic Bladder Dysfunction in Women With Type 2 Diabetes. Journal of Urology, Vol. 181, 198-203, 2009.
- C.) Moore, C.K, McAchrans, S, Daneshgari, F. Current Perception Thresholds of the Female Genitalia in Sexually Active Females. American Urological Association meeting, Poster 1384, 2008.
- D.) Pesce, F., Chronic Pelvic Pain Syndrome: a practical clinical approach (52). Pelveperineology Vol. 27 (2):57-58, 2008.
- E.) Kenton, K., Lowenstein, L., Simmons, J, Brubaker, L. Aging and Overactive Bladder May Be Associated With Loss of Urethral Sensation in Women. Neurourology and Urodynamics, Vol. 26:981-984, 2007.
- F.) Ukimura, O., Ushijima, S., Honjo, H., Iwata, T., Suzuki, K., Mizutani, Y., Kawauchi, A., Miki, T. Neuroselective Current Perception Threshold Evaluation of Bladder Mucosal Sensory Function. European Urology, Vol 45(1):70-76, 2004.
- G.) Ushijima, S. , Ukimura, O. , Miki, T. , Iwata, T. , Inaba, M. ; Honjo, H. The Neurometer as an instrument for appropriate selection and monitoring of intravesical resiniferatoxin therapy for patients with detrusor hyperreflexia. Neurourology and Urodynamics, Vol. 21(4):333-334, 2002.
- H.) Yokoyama, T. , Nozaki, K. , Fujita, O. , Nose, H. , Inoue, M. , Kumon, H. Role of C afferent fibers and monitoring of intravesical resiniferatoxin therapy for patients with idiopathic detrusor overactivity. Journal of Urology, Vol. 172(2):596-600, 2004.

10. Laboratory Animal Applications

- A.) Hayashi Y, Takimoto K, Chancellor MB, Erickson KA, Erickson VL, Kirimoto T, Nakano K, de Groat WC, Yoshimura N. Bladder hyperactivity and increased excitability of bladder afferent neurons associated with reduced expression of Kv1.4 alpha-subunit in rats with

cystitis. Am J Physiol Regul Integr Comp Physiol. Vol. 296(5):R1661-70, 2009.

B.) Nagakura, Y., Malkmus, S., Yaksh, T. Determination of current threshold for paw withdrawal with sine-wave electrical stimulation in rats: Effect of drugs and alteration in acute inflammation. Pain, Vol. 134:293-301, 2008.

C.) Shibata T, Naruse K, Kamiya H, Kozakae M, Kondo M, Yasuda Y, Nakamura N, Ota K, Tosaki T, Matsuki T, Nakashima E, Hamada Y, Oiso Y, Nakamura J. Transplantation of Bone Marrow-derived Mesenchymal Stem Cells Improves Diabetic Polyneuropathy in Rats. Diabetes, Vol 57. 3099-3107, 2008.

D.) Matsumoto, M., Xie, W., Ma, L., Ueda, H. Pharmacological switch Abeta-fiber stimulation-induced spinal transmission in mice with partial sciatic nerve injury. Molecular Pain Vol. 11(4):25, 2008.

E.) Nagakura, Y., Malkmus, S., Yaksh, T. Determination of current threshold for paw withdrawal with sine-wave electrical stimulation in rats: Effect of drugs and alteration in acute inflammation. Pain Vol. 134:293-301, 2008.

F.) Shibata T, Naruse K, Kamiya H, Kozakae M, Kondo M, Yasuda Y, Nakamura N, Ota K, Tosaki T, Matsuki T, Nakashima E, Hamada Y, Oiso Y, Nakamura J. Transplantation of Bone Marrow-derived Mesenchymal Stem Cells Improves Diabetic Polyneuropathy in Rats. Diabetes Vol 57. 3099-3107, 2008.

G.) Abouassaly, R., Liu, G., Yamada, Y., Ukimura, O., Daneshgari, F. Efficacy of a Novel Device for Assessment of Autonomic Sensory Function in the Rat Bladder. Journal of Urology. Vol. 179(3):1167-1172, 2008.

H.) Fujiuchi, A., Toga, T. Pharmacological effect of capsaicin on rat avoidance behaviours elicited by sine-wave electrical stimulation of different frequencies by Neurometer. Journal of Pharmacy and Pharmacology Vol. 60(4):467-71, 2008.

I.) Inoue, M., Ma, L., Aoki, J., Chun, J., Ueda, H. Autotaxin, a synthetic enzyme of lysophosphatidic acid (LPA) mediates the induction of nerve-injured neuropathic pain. Molecular Pain Vol. 4:6, 2008.

J.) Krajnak, K., Waugh, S., Wirth, O., Kashon, M.L. Acute vibration reduces Abeta nerve fiber sensitivity and alters gene expression in the ventral tail nerves of rats. Muscle & Nerve Volume 36(2):197-205, 2007.

K.) Kiso, T., Nagakura, Y., Toya, T., Matsumoto, N., Tamura, S., Ito, H., Okada, M., Yamaguchi, T. Neurometer measurement of current stimulus threshold in rats. The Journal of Pharmacology and Experimental Therapeutics, Vol 297(1):352-356, 2001.

L.) Finkel, J., Besch, V., Hergen, A., Kakareka, J., Pohida, T., Melzer, J., Koziol, D., Wesley, R., Quezado, Z. Effects of Aging on Current Vocalization Threshold in Mice Measured by a Novel Nociception Assay. Anesthesiology Vol. 105:360-9, 2006.

M.) Matsumoto, M., Inoue, M., Hald, A., Xie, W., Ueda, H. Inhibition of Paclitaxel-Induced A-Fiber Hypersensitization by Gabapentin. The Journal of Pharmacology and Experimental Therapeutics Vol. 318(2): 318:735-740, 2006.

11. Environmental/Occupational Medicine

A.) Lubis SH, El Sersi M, Hussein SH, Sakian NI, Salleh R, Rafai J, Al Khamesey K. A biomarker for exposure to organophosphate and carbamate pesticides. Asia Pac J Public Health. Vol.20 Suppl:162-5, 2008.

B.) Husin, L.S., Uttaman, A., Hisham, H.J., Hussain, I.H.S. The Effect of Pesticide on the Activity of Serum Cholinesterase and Current Perception Threshold on the Paddy Farmers in Muda Agricultural Development Area, MADA, Kedah, Malaysia, Medical Journal of Malaysia, Vol. 54(3):320-324, 1999.

C.) Shields, M., Beckmann, S.L., Cassidy-Brinn, G. Improvement in Perception of Transcutaneous Nerve Stimulation Following Detoxification in Firefighters Exposed to PCBs, PCDDs and PCDFs. Clinical Ecology, Vol. 6(2):47-50, 1989.

D.) Bleecker, M.L., Ford, P.D., Vaughan, C.G., Lindgren, K.N., Tiburzi, M.J., Walsh, K.S. Effect of Lead Exposure and Ergonomic Stressors on Peripheral Nerve Function. Environ Health Perspect. Vol. 113(12):1730-1734, 2005.

12. Sports Medicine

A.) Drury D., Greenwood, K., Stuempfle, K., Koltyn, K. Changes in Pain Perception in Women During and Following an Exhaustive Incremental Cycling Exercise. Journal of Sports Science and Medicine, Vol. 4:215-222, 2005.

B.) Appenzeller, O., Wood, S.C., Appenzeller, T. Pentoxifylline, Altitude, and Peripheral Nerve Function. Annals of Sports Medicine, Vol. 4(4):286-288, 1988.

13. Medical Legal

Legal citations are available from: [support @ neurotron.com](http://support@neurotron.com).

14. CPT measures and Dialysis Mortality

A.) Avram, M.M. Neurological Complications in Chronic Uremia Management. Morbidity and Mortality of Dialysis NIH Consensus Development Conference, pp. 123-128, National Institute of Health (USA), Bethesda, MD, 1993.

B.) Mittman, N., Avram, M.M. Management of Uremic Peripheral Neuropathy. Dialysis Therapy, 2nd ed, Nissenson, A.R. & Fine, R.N (eds.), pp. 277-279, 1993.

C.) Weseley, S.A., Liebowitz, B., Katims, J.J. Neuropathy of Uremia: Evaluation by Nerve Conduction Velocity versus Neurospecific Current Perception Threshold. Nephron, Vol. 52:317-322, 1989.

D.) Weseley, S.A., Sadler, B., Katims, J.J. Current Perception: Preferred Test for Evaluation of Peripheral Nerve Integrity. Transactions of the American Society of Artificial Internal Organs, Vol. 34(3):188-193, 1988.

15. Electrical Waveform Neuroselectivity

Katims, J.J., Long, D.M., Ng, L.K.Y. Transcutaneous Nerve Stimulation (TNS): Frequency and Waveform Specificity in Humans. Stereotactic and Functional Neurosurgery (Applied Neurophysiology), Vol. 49:86-91, 1986.

16. Physiologic/Imaging Studies

A.) Yoo, W-K., You, S.H., Ko, M-H., Kim, S.T., Park, C-H, Park, J-W., Ohn, S.H., Hallett, M., Kim, Y-H. High frequency rTMS modulation of the sensorimotor networks: Behavioral changes and fMRI correlates. NeuroImage Vol. 39(4):1886-1895, 2008.

B.) Yamada, Y, Daneshgari, F., Liu, G., Li, N. Spinal c-fos expression induced by neuroselective electrostimulation of bladder afferent pathways. Society for Neuroscience,

Program#/Poster#: 821.2/FF17, 2007.

C.) Krajnak, K., Waugh, S., Wirth, O., Kashon, M.L. Acute vibration reduces Abeta nerve fiber sensitivity and alters gene expression in the ventral tail nerves of rats. Muscle & Nerve Vol 36(2):197-205, 2007.

D.) Koga, K., Furue, H., Rashid, M., Takaki, A., Katafuchi, T., Yoshimura, M. Selective activation of primary afferent fibers evaluated by sine-wave electrical stimulation. Molecular Pain, Vol 1:13, 2005.

<http://www.molecularpain.com/content/1/1/13>

E.) Katims, J.J., Ng, L.K.Y. Transcutaneous Electrical Nerve Stimulation (TENS) Evokes Frequency Dependent Regional Increases in Metabolic Activity of Rat Brain Using the [¹⁴C]2-Deoxyglucose Mapping Technique. New Frontiers In Therapy, Scientific Assembly of The Medical Society of the District of Columbia and the National Institutes of Health, 39, 1983.

17. Comparison with Other Diagnostic Tests: Other neurodiagnostic tests have various degrees of neuroselectivity. For example, the sensory nerve conduction velocity test is selected for the large myelinated fibers.

A.) Putz, Z.S., Tabak, A., Toth, N., Stenes, I., Noemeth, N., Gandhi, R.A., Hermanyi, Z., Keresztes, K., Jermendy, G., Tesfaye, S., Kempler, P. Non-invasive evaluation of neural impairment in subjects with impaired glucose tolerance. Diabetes Care Vol. 32(1):181-3, 2009.

B.) Kang, E.K., Lim, J.Y., Shin, H.I., Gong, H.S., Oh, J.H., Paik, N.J. Comparison between nerve conduction studies and current perception threshold test in carpal tunnel syndrome. Neurophysiol.Clin Vol.38, 127—131, 2008.

C.) Porcheron, A., Mauger, E., Guinot, C., Tschachler, E., Morizot, F. Quantitative sensory methods: investigation of skin sensations in response to a chemical stress. Joint World Congress of International Society for Biophysics and Imaging of the Skin (ISBS) and International Society for Digital Imaging of the Skin (ISDIS). Poster 61, 2008.

D.) Oishi, M., Mochizuki, Y., Suzuki, Y., Ogawa, K., Naganuma, T., Nishijo, Y., Mizutani, T. Current perception threshold and sympathetic skin response in diabetic and alcoholic polyneuropathies. Internal Medicine (Japan), Vol 41(10):819-822, 2002.

E.) Suzuki, K-I., Chung, Y., Yuka, Kobayashi, Goto, Y. Current Perception Thresholds: A New Method for the Assessment of Peripheral Sensory Neuropathy in Diabetes Mellitus. Peripheral Nerve (Japan) 6(1):59-63, 1995.

F.) Masson, E.A., Boulton, A.J.M. The Neurometer: Validation and Comparison with Conventional Tests for Diabetic Neuropathy. Diabetic Medicine, Vol 8:S63-S66, 1991.

G.) Masson, E.A., Veves, A., Fernando, D., Boulton, A.J.M. Current perception thresholds: a new, quick, and reproducible method for the assessment of peripheral neuropathy in diabetes mellitus. Diabetologia, Vol 32:724-728, 1989.

18. Histologic Neuroselectivity

A.) Krajnak, K., Waugh, S., Wirth, O., Kashon, M.L. Acute vibration reduces Abeta nerve fiber sensitivity and alters gene expression in the ventral tail nerves of rats. Muscle & Nerve Volume 36(2):197-205, 2007.

B.) Veves, A., Malik, R., Townsend, C., Thompson, S.,

Boulton, A.J.M. Unmyelinated Fibre Pathology in Diabetic Patients with Mild Neuropathy. Diabetologia, Vol 35, (supp 1):16A, 1992.

19. Pharmaceutical Neuroselectivity

Lidocaine

A.) Liu, S., Kopacz, D.J., Carpenter, R.L. Quantitative Assessment of Differential Sensory Nerve Block after Lidocaine Spinal Anesthesia. Anesthesiology, Vol 82(1):60-63, 1995.

B.) Tay, B., Wallace, M.S., Irving, G. Quantitative Assessment of Differential Sensory Blockade after Lumbar Epidural Lidocaine. Anesthesia and Analgesia, Vol 84:1071-1075, 1997.

C.) Sakura, S., Sumi, M., Kushizaki, H., Saito, Y., Kosaka, Y. Concentration of Lidocaine Affects Intensity of Sensory Block During Lumbar Epidural Anesthesia. Anesthesia and Analgesia, Vol 88(1):123-7, 1998.

D.) Tankano, K., Muramori, S. Masaomi, T., Iseki, M., Suzuki, T., Tomono, K., Goto, H., Miyazaki, T., Nishitani, A., Watanabe, J. Quantitative Investigation of the Effect of Sensory Nerve Anesthesia with 9% Lidocaine Ointment on Healthy Subjects by use of the Neuroselective Current Perception Threshold. J. Pharm. Sci. Technol. (Yakuzaigaku Jpn.), Vol 62(3):105-112, 2002.

E.) Oda, M., Kitagawa, N., Yang, B-X., Totoki, T., Morimoto, M. Quantitative and fiber-selective evaluation of dose-dependent nerve blockade by intrathecal lidocaine in rats. The Journal of Pharmacology and Experimental Therapeutics, Vol 312(3):1132-1137, 2005.

F.) Finkel, J.C., Yang, C.I. Yarvitz, J.L. Patel, K.M. Neuroselective sensory electrodiagnostic evaluation of 4% liposomal lidocaine. Anesthesia and Analgesia, Vol 94,:1259-62, 2002.

Capsaicin - Capsaicin selectively binds to the to the transient receptor potential cation channel, subfamily V, member 1 (TRPV1). TRPV1 stimulates and then inactivates heat and vanilloid-responsive nociceptive neurons, namely small myelinated A_δ and unmyelinated C fibers with no effect on the large myelinated A_β fibers. [Caterina MJ, Schumacher MA, Tominaga M, Rosen TA, Levine JD, Julius D. The capsaicin receptor: a heat-activated ion channel in the pain pathway. Nature. 1997;389:816–824.]

G.) Helliwell RJ, McLatchie LM, Clarke M, Winter J, Bevan S, McIntyre P. Capsaicin sensitivity is associated with the expression of the vanilloid (capsaicin) receptor (VR1) mRNA in adult rat sensory ganglia. Neurosci Lett. 1998;250:177–180.]

H.) Lee, Y-S., Kho, H-S., Kim, Y-K., Chung, S-C. Influence of Topical Capsaicin on Facial Sensitivity in Response to Experimental Pain. Journal of Oral Rehabilitation. Vol 34(1):9-14, 2006.

I.) Kiso, T., Nagakura, Y., Toya, T., Matsumoto, N.,

Tamura, S., Ito, H., Okada, M., Yamaguchi, T. Neurometer measurement of current stimulus threshold in rats. The Journal of Pharmacology and Experimental Therapeutics, Vol 297(1):352-356, 2001.

J.) Matsumoto M, Inoue M, Hald A, Yamaguchi A, Ueda H: Characterization of three different sensory fibers by use of neonatal capsaicin treatment, spinal antagonism and a novel electrical stimulation-induced paw flexion test. Molecular Pain Vol 2:16, 2006.

<http://www.molecularpain.com/content/2/1/16>

Resiniferatoxin (RTX) - RTX is a naturally occurring analogue of capsaicin. RTX functions as an ultra potent capsaicin analogue but also has unique effects such as desensitization without excitation (Szallasi, A. and Blumberg, P. M.: Vanilloid receptors: new insights enhance potential as a therapeutic target. Pain, 68: 195, 1996).

K.) Yokoyama, T., Nozaki, K., Fujita, O., Nose, H., Inoue, M., Kumon, H. Role of C afferent fibers and monitoring of intravesical resiniferatoxin therapy for patients with idiopathic detrusor overactivity. Journal of Urology, Vol 172(2):596-600, 2004.

Opiates Opiates selectively blocking pain transmission in humans and rat studies spinal opiates are observed to have an isolated effect on 5 Hz measures, in contrast systemic administration effects 5 Hz and 250 Hz measures and in rats at high doses 2000 Hz measures as well. Examples of publications:

L.) Liu, S.S., Gerancher, J.C., Bainton, B.G., Kopacz, D.J., Carpenter, R.L: Effects of Electrical Stimulation at Different Frequencies on Perception and Pain in Human Volunteers: Epidural Versus Intravenous Administration of Fentanyl. Anesthesia & Analgesia, Vol 82:98-102, 1996.

M.) Kiso, T., Nagakura, Y., Toya, T., Matsumoto, N., Tamura, S., Ito, H., Okada, M., Yamaguchi, T. Neurometer measurement of current stimulus threshold in rats. The Journal of Pharmacology and Experimental Therapeutics, Vol 297(1):352-356, 2001.

Paclitaxel and Gabapentin

N.) Matsumoto, M., Inoue, M., Hald, A., Xie, W., Ueda, H. Inhibition of Paclitaxel-Induced A-Fiber Hypersensitization by Gabapentin. The Journal of Pharmacology and Experimental Therapeutics Vol. 318(2): 318:735-740, 2006.

20. Regeneration Neuroselectivity

Dellon, A.L. Somatosensory Testing and Rehabilitation, American Occupational Therapy Association, page 152, 1998.

21. Ischemia Studies

- A.) Akagi, D., Arita, H., Komiyama, T., Ishii, S., Shigematsu, K., Nagawa, H., Miyata, T. Objective Assessment of Nerve Injury after Greater Saphenous Vein Stripping. Eur J. Vasc Endovasc Surg, 33(5):625-630, 2007.
- B.) Morell, R. C., Prielipp, R. C., Harwood, T. N., James, R. L.; Butterworth, J. F. Men are more susceptible than women to direct pressure on unmyelinated ulnar nerve fibers. Anesthesia & Analgesia, Vol. 97:1183-8, 2003.
- C.) Baron, G.C., Irving, G.A. Effects of Tourniquet Ischemia on Current Perception Thresholds in Healthy Volunteers. Pain Practice, Vol 2 (2):129-133, 2002.
- D.) Oshima, M., Inagi, T., Yokoyama, K., Shimada, Y., Ogawa, R. Influence of ischemic conditions induced by a tourniquet on functions of nerves, depending on the type of nerve fibers, was examined by measurement of current perception threshold (CPT) values. Anesthesiology, Vol 96:A-722, 2002.
- E.) Morell, R.C., Prielipp, R.C., Butterworth, J.F., Harwood, T.N., Walker, F.O. Males Appear More Susceptible to Ulnar Nerve Ischemia Than Females. American Society of Anesthesiology, Abstract 1124, 2000.

F.) Savidge, M.J., Fahmy, B., Price, C.M., Rodgers, P.D. Quantitative changes in sensory nerve threshold potentials, induced by a tourniquet and measured by a Neurometer® device. The Pain Society. The British and Irish Chapter of the International Association for the Study of Pain. Abstract, 1999.

22. Neuroselective Neuropathy Studies

- A.) Matsumoto, M., Xie, W., Ma, L., Ueda, H. Pharmacological switch in A beta-fiber stimulation-induced spinal transmission in mice with partial sciatic nerve injury. Molecular Pain, Vol. 4, (25), 2008.
- B.) Gater, L Tolterodine Causes Measurable Restoration of Urethral Sensation in Women With Urge Urinary Incontinence. American Urogynecologic Society (AUGS) 29th Annual Scientific Meeting, Paper 56., 2008.
- C.) Matsumoto, M., Inoue, M., Hald, A., Xie, W., Ueda, H. Inhibition of Paclitaxel-Induced A-Fiber Hypersensitization by Gabapentin. The Journal of Pharmacology and Experimental Therapeutics, Vol. 318(2): 318:735B740, 2006.
- D.) Frankel, M., Zimran, A., Elstein, D. Current Perception Threshold Testing for Peripheral Neuropathy in Type I Gaucher Disease. HAEMA. Vol. 9(2):264-269, 2006.
- E.) Bleecker, M.L., Ford, P.D., Vaughan, C.G., Lindgren, K.N., Tiburzi, M.J., Walsh, K.S. Effect of Lead Exposure and Ergonomic Stressors on Peripheral Nerve Function. Environ Health Perspect. Volume 113(12):1730-1734, 2005.
- F.) Tseng, C.H. Abnormal current perception thresholds measured by neurometer among residents in blackfoot disease-hyperendemic villages in Taiwan, Toxicology Letters, Vol 146(1):27-36, 2003.
- G.) Kurozawa, Y., Nasu, Y. Current Perception Thresholds in Vibration-Induced Neuropathy. Archives of Environmental Health, Vol 56(3):254-256, 2001.
- H.) Menkes, D.L., Swenson, M.L., Sander, H.W. Current Perception Threshold: An Adjunctive Test for Detection of Acquired Demyelinating Polyneuropathies. Electromyography and Clinical Neurophysiology, Vol 40; Part 4:195-204, 2000.
- I.) Ro, L.S., Chen, S.T., Tang, L.M., Hsu, W.C., Chang, H.S., Huang, C.C. Current Perception Threshold Testing in Fabry's Disease. Muscle & Nerve, Vol 22: 1531-1537, 1999.
- J.) Husin, L.S., Uttaman, A., Hisham, H.J., Hussain, I.H.S. The Effect of Pesticide on the Activity of Serum Cholinesterase and Current Perception Threshold on the Paddy Farmers in Muda Agricultural Development Area, MADA, Kedah, Malaysia, Medical Journal of Malaysia, Vol 54(3):320-324, 1999.

23. Hyperglycemic Effects on Sensory Nerve Function

Dobretzov et al. Mechanical hyperalgesia in rats with chronic perfusion of lumbar dorsal root ganglion with hyperglycemic solution. J. Neurosci. Meth, 110, 9-15, 2001.

24. Diabetic Neuropathy and Hyperesthesia in Early Progressive Neuropathy

- A.) Putz, Z.S., Tabak, A., Toth, N., Stenes, I., Nemeth, N., Gandhi, R.A., Hermanyi, Z., Keresztes, K., Jermendy, G., Tesfaye, S., Kempler, P. Non-invasive evaluation of neural impairment in subjects with impaired glucose tolerance. Diabetes Care, Vol. 32(1):181-3, 2009.
- B.) Chiheb, S., Pinal, I., Rivero Luis M., Cosson, E., Nguyen, MT, Katims, JJ, Valensi, P. Neuroselective electrodiagnostic evaluation of peripheral sensory nerve function in obese patients without diabetes. NEURODIAB XVIII. 18th Annual Meeting of the Diabetic Neuropathy Study Group of the European Association for the Study of Diabetes. Poster 51 Orvieto, Italy, 2008.
- C.) Keresztes, K. Istenes, I., Folhoffer, A., Lakatos, P.L., Horvath, A., Csak, T., Varga, P., Kempler, P., Szalay, F., Autonomic and sensory nerve dysfunction in primary biliary cirrhosis. World J Gastroenterol, Vol 10(20):3039-43, 2004
- D.) Nonomura, H. Some Early Stage Carpal Tunnel Syndrome Patients Show Sensory Disturbance as Hyperesthesia in Quantitative Sensory Evaluation Using Current Perception Threshold Testing. Journal of the Japanese Society for Surgery of the Hand. Vol 19(6):752-754, 2002.
- E.) Takekuma, K.; Ando, F.; Niino, N.; Shimokata, H. Prevalence of hyperesthesia detected by current perception threshold test in subjects with glucose metabolic impairments in a community. Internal Medicine. Vol 41(12):1124-9, 2002.
- F.) Jiang, Y-D., Hsieh, S-T., Wu, H-P., Tai, T-Y., Katims, J.J., Chuang, L-M. Characterization of hyperesthetic stage of diabetic neuropathy with current perception threshold, a method for diabetic neuropathy staging. XI Meeting, Diabetic Neuropathy Study Group of the European Association for the Study of Diabetes (EASD) NEURODIAB. 2001.
- G.) Umezawa, S., Kanamori, A., Yajima, Y., Aoki, C. Current Perception Threshold in evaluating diabetic neuropathy. Diabetes (Japan) Vol 8(1):711-719, 1997.

25. Hyperesthesia with Lysosomal Storage and Hepatic Related Diseases

- A.) Kurucsai, G., Joo, I., Fejes, R., Szekely, I., Tihanyi, Z., Altorjay, A., Funch-Jensen, P., Varkonyi, T., Madacsy, L. Somatosensory hypersensitivity in the referred pain area in patients with chronic biliary pain and a sphincter of oddi dysfunction: New aspects of an almost forgotten pathogenetic mechanism. American Journal of Gastroenterology Vol. 103 (11), 2717-25, 2008.
- B.) Frankel, M., Zimran, A., Elstein, D. Current Perception Threshold Testing for Peripheral Neuropathy in Type I Gaucher Disease. HAEMA. Vol. 9(2):264-269, 2006.
- C.) Ro, L.S., Chen, S.T., Tang, L.M., Hsu, W.C., Chang, H.S., Huang, C.C. Current Perception Threshold Testing in Fabry's Disease. Muscle & Nerve, Vol 22: 1531-1537, 1999.
- D.) Keresztes, K. Istenes, I., Folhoffer, A., Lakatos, P.L., Horvath, A., Csak, T., Varga, P., Kempler, P., Szalay, F., Autonomic and sensory nerve dysfunction in primary biliary cirrhosis. World J Gastroenterol, Vol 10(20):3039-43, 2004.

26. Pain Perception Threshold (PPT) and Neuroselective Allodynia

Raj, P.P., et al. Painless Electrodiagnostic Current Perception Threshold and Pain Tolerance Threshold Values in CRPS Subjects and Healthy Controls: A Multi-Center Study. Pain Practice, Vol 1(1):53-60, 2001.

27. Skin Freeze Lesion Studies, Hyperpathia and Direct vs End Organ Stimulation

- A.) Porcheron, A., Mauger, E., Guinot, C., Tschachler, E., Morizot, F. Quantitative sensory methods: investigation of skin sensations in response to a chemical stress. Joint World Congress of International Society for Biophysics and Imaging of the Skin (ISBS) and International Society for Digital Imaging of the Skin (ISDIS). Poster 61, 2008.
- B.) Lötsch J, Angst MS. The mu-opioid agonist remifentanyl attenuates hyperalgesia evoked by blunt and punctuated stimuli with different potency: a pharmacological evaluation of the freeze lesion in humans. Pain Vol 102:151 - 161, 2003.
- C.) Tegeder I, Meier S, Burian M, Schmidt H, Geisslinger G, and Lötsch J. Peripheral opioid analgesia in experimental human pain models. Brain, Vol 126(5), 1092-102, 2003.
- D.) Gustorff, B., Hoerauf, K.H., Lierz, P., Kress, H.G. Comparison of different quantitative sensory testing methods during remifentanyl infusion in volunteers. British Journal of Anaesthesia. Volume 91(2):203-8, 2003.

28. Functional Magnetic Resonance Imaging (fMRI) Studies

- A.) Symonds, L.L., Gordon, N.S., Bixby, J.C. Mande, M.M. Right-Lateralized Pain Processing in the Human Cortex: An fMRI Study. J Neurophysiol 95: 3823-3830, 2006. 1)
- Alkire, M.T., White, N.S., Hsieh, R., Haier, R.J. Dissociable Brain Activation Responses to 5 Hz Electrical Pain Stimulation: A High-field Functional Magnetic Resonance Imaging Study. Anesthesiology, Vol 100:939-46, 2004.
- B.) Alkire, M.T., White, N.S., Hsieh, R., Haier, R.J. Dissociable Brain Activation Responses to 5 Hz Electrical Pain Stimulation: A High-field Functional Magnetic Resonance Imaging (fMRI) Study. Anesthesiology, Volume 100:939-46, 2004.
- C.) Bocerra, L.R., Stojanovic, M., Chang, I., Breiter, H., Tracey, I., Fishman, S., Edwards, A., Gonzalez, R.G., Borsook, D. fMRI Mapping of CNS Activation Following Noxious Heat and Electrical Stimuli. Presented at the Fifth Scientific Meeting of the International Society for Magnetic Resonance in Medicine in Vancouver, April 1997.
- D.) Stojanovic, M., Becerra, L.R., Breiter, H.C., Fishman, S.M., Edwards, A., Chang, I.W., Borsook, D., Gonzalez, G. fMRI Analysis of Human CNS Activation Following Noxious Electrical Stimulation at 5 Hz and 250 Hz. Poster presentation at the Annual Meeting of the American Pain Society, NO, LA, 1997.

Legal Notices: The Neurometer® device and/or the methods of application are patented under one or more of the following patents and international patents pending: US Nos. 4,305,402 & 4,503,863, UK No 2,052,994, Canada No 1,157,526, Japan No 3138428, Brazil No 9610321-3. Neurometer®, CPT/Eagle®, Goldtrode® and Softape® are registered trademarks of Neurotron, Inc.

NEUROMETER[®] CPT/C[®]

Automated Neuroselective Sensory Nerve Conduction Thresholds (sNCT)



NEUROMETER[®] CPT/C[®] Applications

Differential Diagnosis: axonal versus demyelinating polyneuropathy, radiculopathy, myelopathy, compressive neuropathy, focal nerve lesions/peripheral nerve injuries, differentiate between large and small fiber neuropathies

Clinical Monitoring: document sensory impairments at any cutaneous or mucosal site, determine clinical severity of impairment or evaluate disability, high compliance for serial evaluations, assess neurotoxicity or neuro-protective sensation

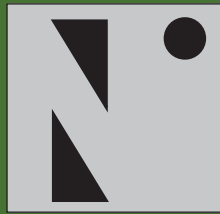
Outcome Measurements: pharmaceuticals efficacy/neurotoxicity, nerve blocks, response to therapeutic interventions, nerve regeneration and recovery of function post surgery/injury

Occupational Testing: neck & low back injury, carpal tunnel syndrome, vibration neuropathy, neurotoxic exposure, epidemiological studies

Laboratory Research: non-invasive neuroselective animal response testing, atraumatic stimulus permits repeated testing of the animals at the same cutaneous site

Used in the Following Specialties:

- Anesthesiology
- Dentistry
- Dermatology/Cosmetics
- Endocrinology
- Family Practice
- Nephrology
- Neurology
- Neuro, Orthopedic & Plastic Surgery
- Occupational Medicine
- Oncology
- Pain Medicine
- Pharmacology and Toxicology
- Physical Medicine & Rehab
- Podiatry
- Rheumatology
- Urology



NEUROTRON, INCORPORATED
INNOVATIVE MEDICAL TECHNOLOGY

Phone: **(888) 804-5486**
(303) 316-0555

web: **www.neurotron.com**

email: **support@neurotron.com**

fax: **(303) 557-6152**

Established 1981